

TULA

Outdoor Sconce



9777 Reavis Park Drive
St. Louis, MO 63123
800.331.2425 or 314.631.6000

sales@glighting.com www.glighting.com

GENERAL SPECIFICATION

LED: High efficiency LEDs are field serviceable.

LED Dimming: 1% 0-10V dimming standard. Driver mounted remotely within 25ft from fixture body. Remote driver box included.

Body: Formed .090 Al front and spun .80 Al body.

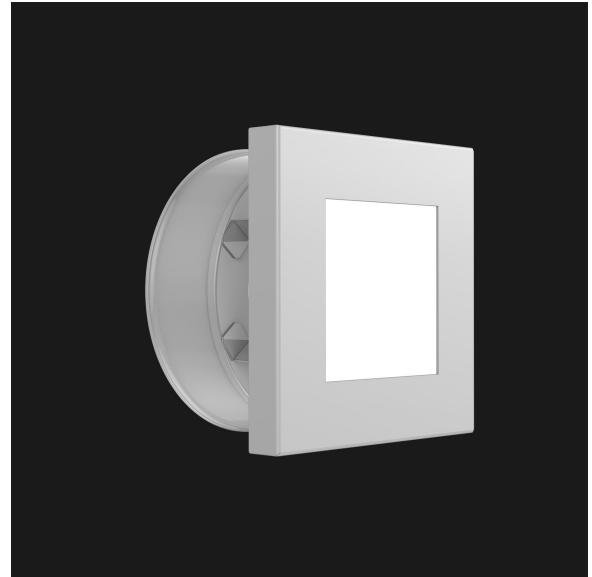
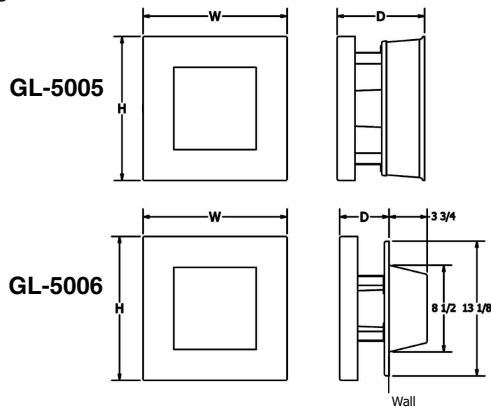
Acrylic: UL-94 HB Flame Class rated.

Standard Finishes: Highly durable oven cured no VOC premium powder coat.

Modified: Contact factory for modified lamping and decorative fronts.

Surge Protection: External surge protector provided as standard.

Listing: Fixture is ETL listed for wet locations.



SAMPLE CATALOG NUMBER:

GL-5005-

F4-

W-

SA-

A

MODEL NO.	LAMPING	LENS	FINISH	OPTION(S)
GL-5005 W in 14" mm 360 H in 14" mm 360 10lbs D in 9" mm 230 4.5kg	F0. 12LED30 F5. 12LED35 F4. 12LED40 G0. 18LED30 G5. 18LED35 G4. 18LED40	Standard: W. White Opal Optional: S. Satin White Acrylic is UL-94 HB Flame Class rated.	Standard: Powder Coat BLK- Black BL- Blue GR- Gray LG- Light Gray BE- Beige PAB- Antique Brass PA- Painted Aluminum PTC- Painted Copper WH- White DBZ- Dark Bronze NSN- New Satin Nickel BRN- Brown RD- Red CH- Champagne RG- Reed Green SG- Sungold GM- Gun Metal POR- Oil Rubbed Bronze Textured Powder TLV- Light Verdigris TWH- Textured White TBL- Textured Black TS- Textured Silver TBN- Terra Brown TBZ- Textured Bronze Premium: SA- Satin Aluminum	A. No Options EL. Emergency LED Remote mount up to 10' from light source in controlled environment with an area temperature range of 32°-131°F. Specify 120 or 277 voltage.
GL-5006 W in 14" mm 360 H in 14" mm 360 10lbs D in 4 3/4" mm 120 4.5kg Recessed housing available for rough-in installation. Contact factory for availability. I.C. rated for wall or ceiling mount.				

All dimensions are nominal.

Light Source Definition

Code	LED	CRI	Rated Life Hrs	Kelvin	Board Lumens
12LED30	12W LED	+80	50000	3000K	1490
12LED35	12W LED	+80	50000	3500K	1490
12LED40	12W LED	+80	50000	4000K	1490
18LED30	18W LED	+80	50000	3000K	2000
18LED35	18W LED	+80	50000	3500K	2000
18LED40	18W LED	+80	50000	4000K	2000

Universal Voltage unless otherwise specified.